



SGS MUSCOWPETUNG

ABORIGINAL CONSTRUCTION MONITORING

WEEKLY REPORT

SPREAD # 6

OCTOBER 22ND TO OCTOBER 28TH, 2018

Social and Cultural Features

Field Observation	# of occurrences	Description and Mitigation Measures	Mitigation Status	Further Action Required (Yes/No)
Traditional Use Area (hunting, fishing, gathering, trapping)	2	Stony Creek	Completed	No
Rock Formations (rocks of significance, tipi rings, etc.)	2	Stony Creek – Rocks of interest Roped off with signage Pipestone Creek – Rocks of interest geo textile and matting were placed over top for protection	Completed	No
Artifacts	0			
Bones	0			
Potential Gravesites	0			

Environmental Features

Field Observation	# of occurrences	Description and Mitigation Measures	Mitigation Status	Further Action Required (Yes/No)
Medicinal or Cultural Plants	4	VG 75 Shining leaved arnica VG 76 Pincushion Beardtongue VG 77 Golden Bean VG 69 Tall Beggars ticks VG 69 740 + 102 Tall beggars ticks The rare plant areas are roped of with signage the seed banks are properly marked and separated.	Complete	No
Aquatic Life	3	Stony Creek – NLF – Sweeps were completed area has fencing buffer and signage Pipestone Creek – NLF- sweeps were completed areas on both sides have fencing buffers with signage. Snake Hibernaculum WF 164 SSKP 795.26 (roped off with signage)	Complete	No
Animal Observations or Burrows	0			

Bird Nests	0			
Trees (Red Willow)	0			
Wetlands	6	SK 952 Class III SK 953 Class III MB 001 - 006 Class III SK 849 class III SK 847 -3 class III SK 876 Class IV	Complete	No
Watercourse Crossing	0			

Additional Observations and Summary of Activities or Concerns

Preventative maintenance and daily inspections on trucks was completed by our team this week ensuring all our safety equipment required was maintained. Fire Extinguisher, first aid kit, spill kit, shovel/pail bio spray, back up alarm is in working order buggy whip and cell boosters installed. Copies of the Enbridge safe work guidelines/ LP/MP Safety manual and the current ERP are in both trucks.

Safety focussed on Safe Cribbing and Skidding – proper placement for the pipe to sit on. Safety is everyone’s responsibility on site, if you see an unsafe act you must stop the worker and correct them. Do not choose to look the other way. When it comes to safety we must lead by example and set an example.

Our team continued to monitor at the Pipestone Creek 805 + 567 Heritage Resource - TLU - ID # 151 SSKP 805.63-805.93 At 805 + 739 the track hoe placed the matting on top of the geo textile on the east side up to the tracks covering the rocks of interest. The dozer was cleaning up the remainder of the soil and building up the ramp to the tracks on the west side, geo textile was laid then clay and rocks from the adjacent area on the same side was put on top, wing walls were completed. Ramp was built up to the tracks on the east side Geo textile then Soil, another three layers of geotextile and mats placed on top. Wing walls were completed along the sides. Across the creek on the east side Hydro vacs daylighted oil lines 15 holes were done 805 + 920, 805 + 938, and 805 + 940 this area was mowed as well. A slurry pit was excavated 807 + 175 for hydro vac catchments properly completed roped off with signage. Two lines locate sweeps were completed within the fenced area at the Cromer station prior to hydro vacs daylighting holes to exposed buried lines within the station fenced area. Matting was placed at the far north east corner for the hydro vacs to drive on top while daylighting the lines in that area. The track hoe washed and moved to west side of pipestone Creek 803 + 940 and started to dig the bore pit at the west side of the tracks with a spotter. Archaeologist was on site. This west side of the creek was stripped and graded with the soils and rocks separated properly. Including the two piles of soil (seed bank) for the pin cushion bear tongue and shining leaved arnica, these piles are roped off with signage.

Stony Creek disking was completed to the right of way, Along the roped off area of interest disking was completed 5m away from the buffer. The Creek is dry (NFB) matting is placed across the creek for equipment and vehicles to travel over. The area was stripped with the power dozer after discing completed with another dozer pushing the soils into piles along the right a way. Archaeologist was on site. All the signage that was taking down during the excavations was put back up.

Three discs worked east completing up to 803 + 494 Discing was completed around the three rare plant buffers VG 71, VG 72 VG 74 and the track hoe was clearing brush to one pile. Almost all the discing is completed for spread six.

Our team observed the area 788 + 352 had been stripped with the power dozer, the dozer was pushing the soil into piles along the ROW, VG 69 was roped off with a 5m buffer wetlands SK 952 Class III SK 953 Class III MB 001 - 006 Class III were all marked with signage and buffers. Two power dozers are stripping top soil on spread six, the stripping and grading of the ROW is moving further east.

Observed crews working at 740 + 100 this area is a tree pasture with wetlands, within this area there is rare plants (the tall beggars tick) roped off and properly marked. The south west corner trees had been cut back 10 m of the right of way has been disked and wet land SK 849 class III has been ramped with a 10 m buffer. And additional 100m no fuelling buffer. East of this wetland is another rare plant location VG 64 roped off and properly marked. The track hoe dug and piled clay for the ramp crossing wetland SK 847 -3 class III. Geo textile matting was laid across and the clay was placed on top. Geo wingwalls were constructed to complete the ramp.

Throughout the week many ramps were built for equipment crossing, ROW access and temporary ramps were replaced with permanent ones. 752 + 850 Track hoe's and rock trucks continued to move clay building the ramp across wetland SK 876 (Aqua dam) The ramp through SK 799 Class IV 729 +467 was completed with Geo teck installed throughout the wetland area and clay built up and packed for road crossing. At 737 + 640 Dozer was cleaning up soil on the ramp built across SK 828 and the access built across SK 826 was roped off with signage.

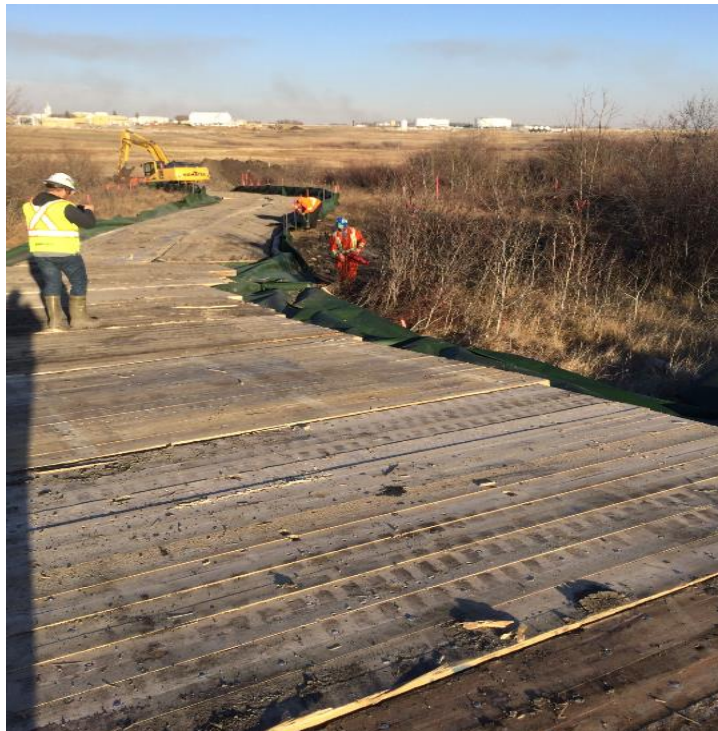
Areas adjacent to the ROW's were tackifier (soil stabilization) was completed. Picker truck is moving bore pipe from the pipe yards to the right a way. Crews have started to complete bore bays at road crossings. All excavations are fenced off with Danger open pit signage. Welders were completing the welds on the track bore at 766 + 022 crossing under the railway tracks.

Our week continued with monitoring and observing crews working in ROW areas on various stages of the pipeline.

Photos of Sites Visited & Topics Discussed This Week



Pipestone Creek ICM's and Archaeologist walk the area excavated



Bridge constructed over the rocks of interest at the Pipestone Creek



Soil piled with rare plant seeds Pipestone Creek West side



Track hoe digging bore pit west side of Pipestone creek



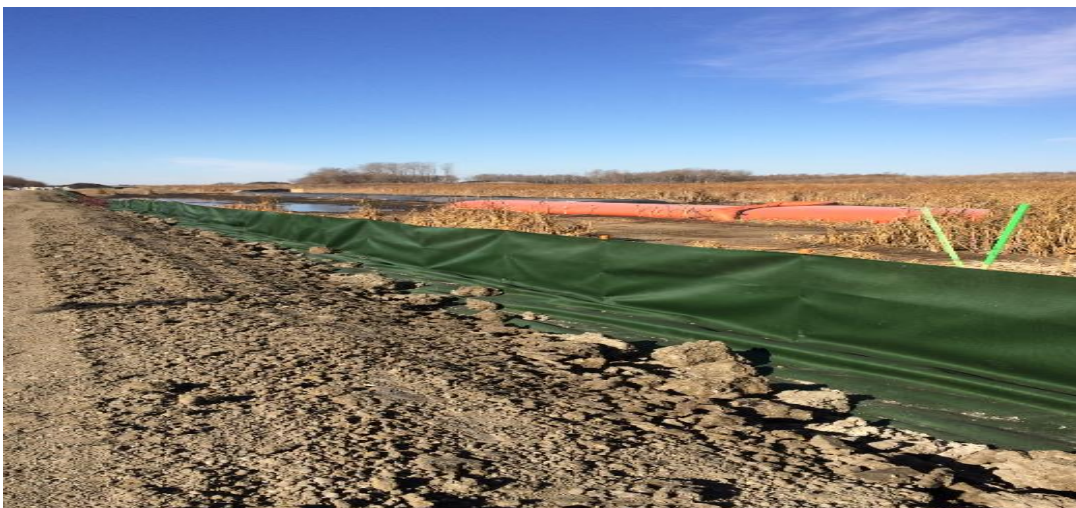
Hydro vacs exposing lines at the Pipestone Creek East side within the Cromer Station



Hydrovac at Outside of Cromer station exposing lines.



729 + 467 Ramp built across Wetland SK 799





749 + 602 Bore pit excavation



740 + 150 Track hoe pilin clay for ramp across wetland SK 847



Stony Creek area disced around the rocks of interest buffer





Discing 800 + 902

Approvals

Prepared by

D. Masney

Darlene Masney
Senior Construction Monitor

Oct 28, 2018

Reviewed by

J Roach

Joseph Roach
Project Manager

October 30, 2018

Approved by

[Signature]

Emmanuel Olotu, P.Eng.
Technical Manager, Geotechnical

October 30, 2018

This document is issued by the Company under its General Conditions of Service available on request and accessible at http://www.sgs.com/terms_and_conditions.htm. Attention is drawn to the limitation of liability, indemnification and jurisdiction issues defined therein. Any other holder of this document is advised that information contained hereon reflects the Company's findings at the time of its intervention only and within the limits of Client's instructions, if any. The Company's sole responsibility is to its Client and this document does not exonerate parties to a transaction from exercising all their rights and obligations under the transaction documents. Any unauthorized alteration, forgery or falsification of the content of appearance of this document is unlawful and offenders may be prosecuted to the fullest extent of the law.